

Code 61 (Split and One-Piece Clamps)

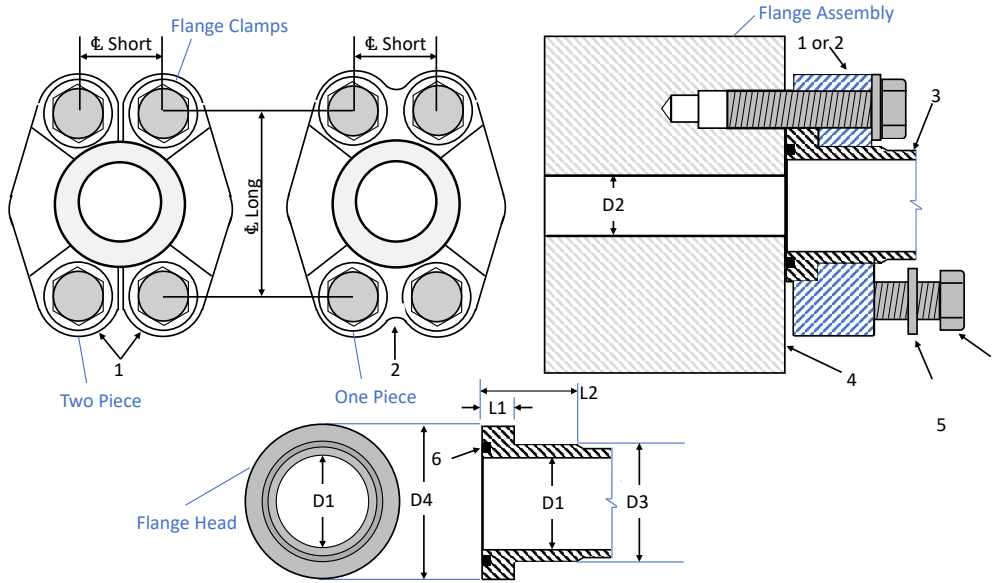


Table 1		ISO and SAE Code 61 Flange Data										
Nominal Size		1	2	3	4	5	D2		Maximum Working Pressure		Minimum Burst Pressure	
							D2 must not be greater than D1		MPa		psi	
mm	in					Flat Washer	mm	in			MPa	psi
13	0.50	Two-piece flange clamp	One-piece flange clamp	Flanged head	Mounting face	M8	11.5 to 13.0	0.44 to 0.50	35	5,075	140	20,300
19	0.75					M10	17.7 to 19.2	0.69 to 0.75	35	5,075	140	20,300
25	1.00					M10	24.1 to 25.6	0.94 to 1.00	32	4,640	128	18,560
32	1.25					M10	30.5 to 32.0	1.19 to 1.25	28	4,060	112	16,240
38	1.50					M12	36.7 to 38.2	1.44 to 1.50	21	3,045	84	12,180
51	2.00					M12	49.5 to 51.0	1.94 to 2.00	21	3,045	84	12,180
64	2.50					M12	62.0 to 63.5	2.44 to 2.50	17.5	2,538	70	10,150
76	3.00					M16	74.7 to 76.2	2.94 to 3.00	16	2,320	64	9,280
89	3.50					M16	87.5 to 89.0	3.44 to 3.50	3.5	508	14	2,030
102	4.00					M16	100.1 to 101.6	3.94 to 4.00	3.5	508	14	2,030
127	5.00					M16	125.5 to 127.0	4.94 to 5.00	3.5	508	14	2,030

Table 2		ISO and SAE Flange Head For Code 61											
Nominal Size		O-ring code (6)	D1		D3		D4		L1		L2		
			mm	in	mm	in	mm	in	mm	in	mm	in	
13	0.50	210	12.70	0.50	23.9	0.941	30.2	1.189	6.8	0.268	13	0.512	
19	0.75	214	19.05	0.75	31.8	1.252	38.1	1.500	6.8	0.268	14	0.551	
25	1.00	219	25.40	1.00	38.1	1.500	44.45	1.750	8.0	0.315	14	0.551	
32	1.25	222	31.75	1.25	43.2	1.701	50.8	2.000	8.0	0.315	14	0.551	
38	1.50	225	38.10	1.50	50.3	1.980	60.35	2.376	8.0	0.315	16	0.630	
51	2.00	228	50.80	2.00	62.2	2.449	71.4	2.811	9.6	0.378	16	0.630	
64	2.50	232	63.50	2.50	74.2	2.921	84.1	3.311	9.6	0.378	18	0.709	
76	3.00	237	76.20	3.00	90.2	3.551	101.6	4.000	9.6	0.378	19	0.748	
89	3.50	241	88.90	3.50	101.6	4.000	114.3	4.500	11.3	0.445	22	0.866	
102	4.00	245	101.60	4.00	114.3	4.500	127	5.000	11.3	0.445	25	0.984	
127	5.00	253	127.00	5.00	139.7	5.500	152.4	6.000	11.3	0.445	28	1.102	

Table 3				ISO and SAE Code 61 Screw Data							
Nominal Size		Screw Thread		Screw Length		Screw Torque		Φ Long		Φ Short	
								mm	in	mm	in
13	0.50	M8	5/16-18	32	1.25	32	24	38.1	1.500	17.5	0.688
19	0.75	M10	3/8-16	32	1.25	60	44	47.6	1.875	22.2	0.875
25	1.00	M10	3/8-16	32	1.25	60	44	52.4	2.062	26.2	1.031
32	1.25	M10	7/16-14	38	1.50	92	68	58.7	2.312	30.2	1.188
38	1.50	M12	1/2-13	38	1.50	150	111	69.9	2.750	35.7	1.406
51	2.00	M12	1/2-13	38	1.50	150	111	77.8	3.062	42.9	1.688
64	2.50	M12	1/2-13	44	1.75	150	111	88.9	3.500	50.8	2.000
76	3.00	M16	5/8-11	44	1.75	295	218	106.4	4.188	61.9	2.438
89	3.50	M16	5/8-11	51	2.00	295	218	120.7	4.750	69.9	2.750
102	4.00	M16	5/8-11	51	2.00	295	218	54.0	2.125	77.8	3.062
127	5.00	M16	5/8-11	57	2.25	295	218	152.4	6.000	92.1	3.625